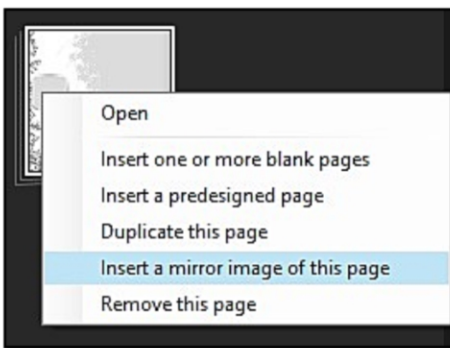


1 Add a template to your project that has a masked photo & save.
Home Ribbon: Page: Template: **Using a template page from an art kit.**
 My sample: Artistic License Masked Madness: Set 1 by Seatrout Scraps



2 Right click on page in pages panel. Select: **Insert a mirrored image of this page.**

3 Slide added page to the right of the original page. Adjust view to show the two page spread.
View: Spreads: **Two Bound Pages.**



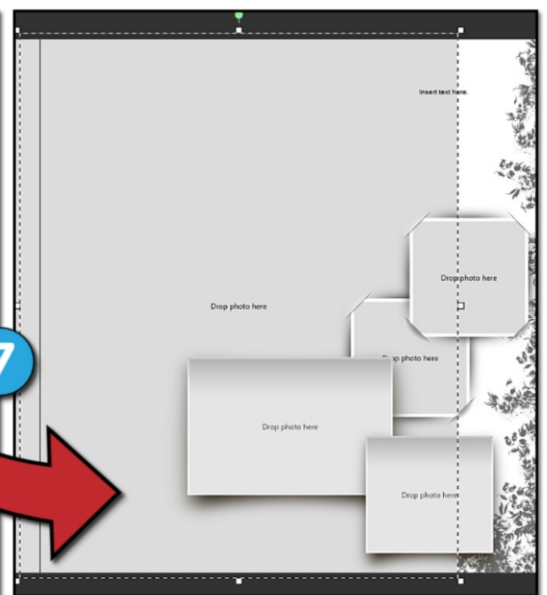
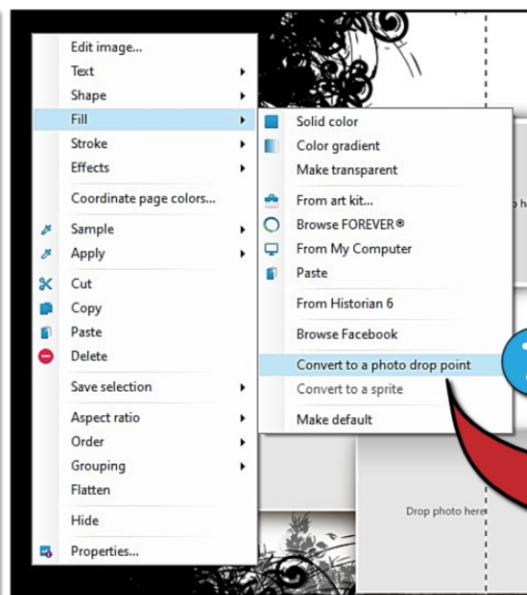
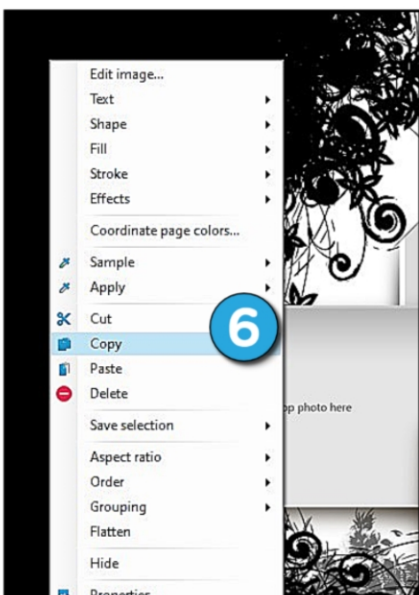
The page on the right side of the two page spread shows what happens when you mirror a page with a masked photo.

4 Select a masked photo opening. Change fill in OAT. Fill: Solid Color: **Black.**

5 Right click on photo frame: Flatten. Flip Horizontally. Arrange Ribbon: Rotate: **Flip Horizontally.** Right click: Flatten again.

6 Right click on the flattened image: Select **Copy.**

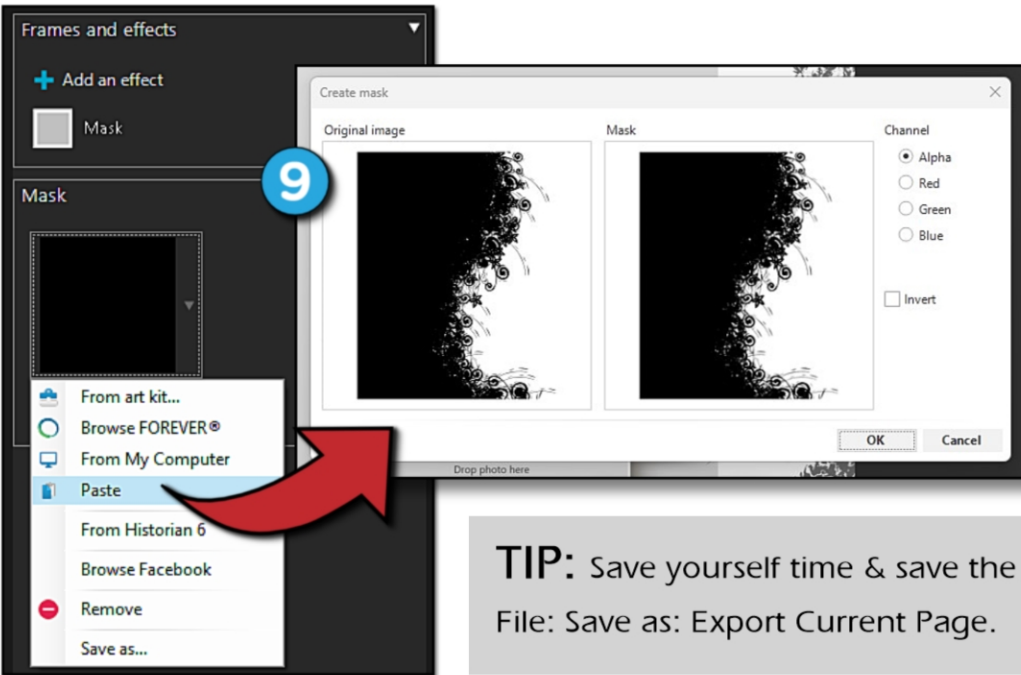
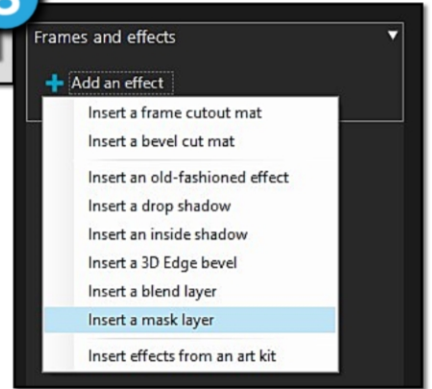
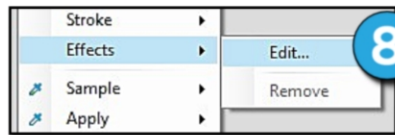
7 Right Click on flattened image: Fill: **Convert to a photo drop point.**





TIPS4U

- 8 Right click again: Effects: Edit.
- 8 Click Add an effect: Select Insert a mask layer.
- 9 In the Frame & Effects operation panel (right side of workspace), right click on black square, select Paste. Click ok to preview. Click ok again to apply.



TIP: Save yourself time & save the adjusted page as a template.
File: Save as: Export Current Page.



Now the mask is mirrored like the rest of the layout.